



FUEL CONTROL PANELS

www.ipccontrols.com

info@ipccontrols.com • (580) 252-9987

Integrated Process Controls - 1301 South Highway 81, Duncan, OK 73533



www.ipccontrols.com



Fuel Control Panels - Modules Control

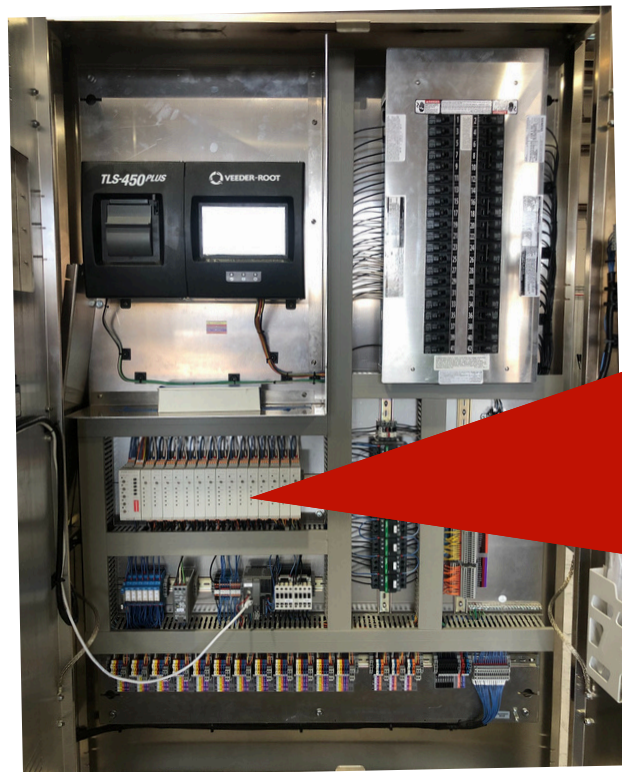


ISOFuel is a mechanical based isolation control system that simplifies the electrical installation of fueling equipment, it's custom built to ensure proper site operation with no wasted hardware - keeping size and price in mind, and it's built by electricians for electricians with the goal of providing a quick, easy and simple installation.

Benefits

- **SPACE SAVING.** Wall space is a premium in the backroom of stores.
- **Integrated 24 volt, fail safe all stop circuit** with indicators showing which button is pushed.
- **Dedicated electrical subpanel for the fueling system.**
- **No need to purchase individual contactors or motor starters for the STP's, they are included.**
- **Save time on installation.**
- **All of the wiring to dispensers, pumps and ATG have identified terminals legends not just numbers.**
- **Many more benefits and options not listed. Please give us a call to discuss.**

Modules Control

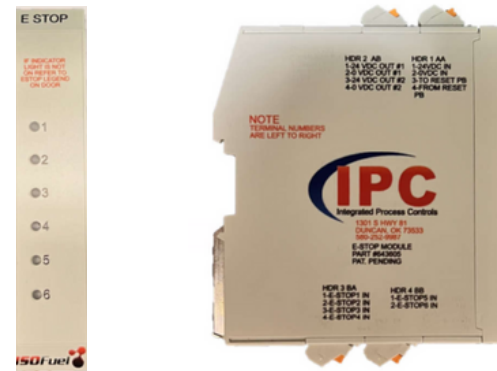


The ISOFuel Modules allows the user the ability to configure a fuel system to easily function with any ATG manufacturer and control any STP, whether they are using contactors, SC controllers or VFC drives.



E-STOP

The E-STOP module provide the control power for all of the other modules. Each estop button will need to have a dedicated pair of #14 thhn conductors brought back to the ISOFuel panel. At the site, each estop button will need to be numbered so that in the event one is pushed the led, on the module will indicate which button is pushed. An estop reset button is located on the front of the panel and will need to be pushed to reset an estop environment.



Dispenser

Dispenser Module controls one dispenser. The maintenance switch will open all conductors going to the dispenser. The circuit for the dispenser, L1 and neutral, will connect to the module from the breaker.



Pump Control

The Pump Control Module receives up to five (05) product hook signals from each Dispenser Module via a T-BUSS which is the communication backbone for the modules.

Each STP has a dedicated maintenance switch that will completely isolate the pump, drive or smart controller. Do not use the breaker as a maintenance switch, because voltage will still be present on the enable circuits. The ability to isolate all components for the STP's circuit is a life safety feature of ISOFuel that competitors do not offer.



Low Voltage

Low Voltage or ICOM module, it has up to four (4) connections in and out and up to two (2) ethernet connections in and out for cat 5 or 6, they are powered by the corresponding dispenser module.

By pressing the dispenser switches to the left, all wiring to the dispenser will be disconnected. This function follows NEC 2017 requirements for fueling equipment.

